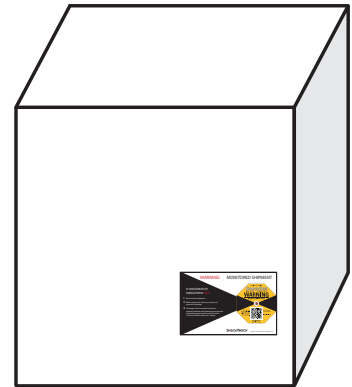
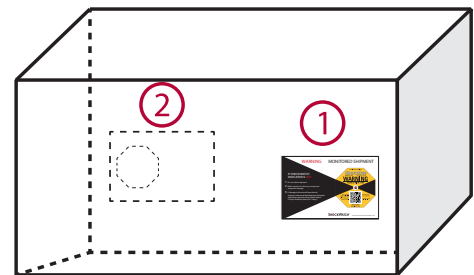


ShockDot Mounting Instructions

- 1) Place labels on the right edge of the shipment.
- 2) Avoid the center of the package because the mounting location should be structurally sound.
- 3) Place labels on the longest side of the package.
- 4) The heavier the shipment, the lower you should mount the label.
- 5) Place the Alert Sticker on the bill of lading as a reminder for receivers to check the indicator immediately upon arrival.



- 1) Mount the ShockDot Impact Indicator in the lower third of the package/pallet as close to the edge as possible.
- 2) If the package is twice as long as it is wide, use two ShockDot impact indicators. Place a second indicator in the same position on the opposite side of the package.
- 3) While these instructions are considered best practices, each situation may be different. If you have any questions or would like to reorder, please contact your SpotSee Sales representative or **call (800) 527-9497 or +1 (214) 736-4580 or email: info@spotsee.io**



- 4) **To reorder, call (800) 846-2468 or email orders@spotsee.io**