

3C\Temp User Manual

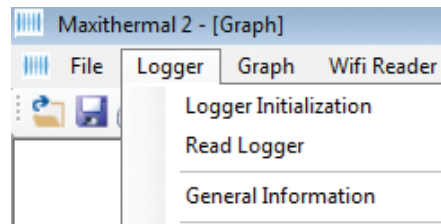


3C\Temp User Manual

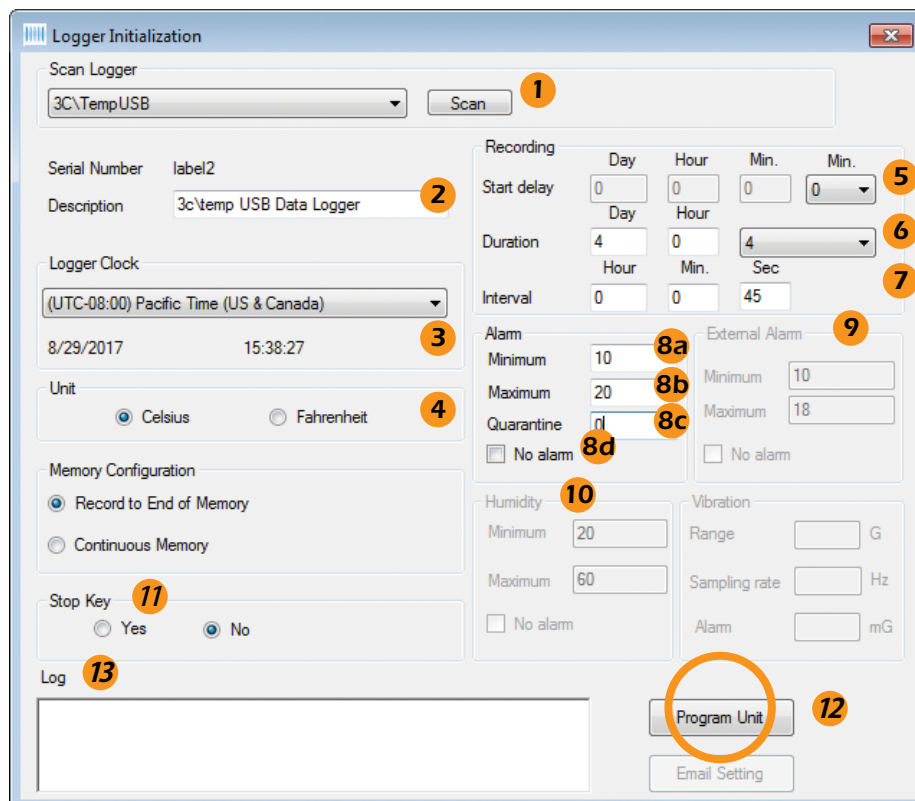
Initializing the Logger:

Begin by starting the MaxiThermal2 software, connect the USB cable, or plug the device into the computer USB port.

On the menu bar select **Logger -> Logger Initialization** in the drop-down menu. The Logger Initialization window will open.



- 1) If more than one logger is connected, use the drop down menu to choose which logger to program.
If the logger was connected after opening the **Logger Initialization** window, use the **Scan** button to find it.
- 2) For **Description**, enter a descriptive name for the recording.
- 3) For **Logger Clock**, select the Time Zone for the logger clock.
- 4) For Unit, select temperature scale, °F = Fahrenheit or °C = Celsius.
- 5) Select a **Start Delay** time if you want a delay after pressing the start button, before starting to record.

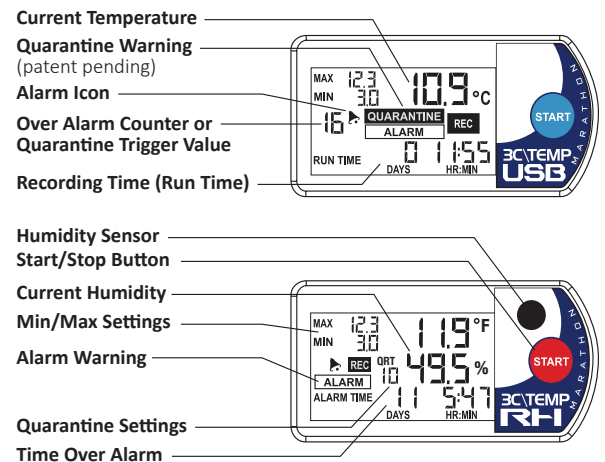
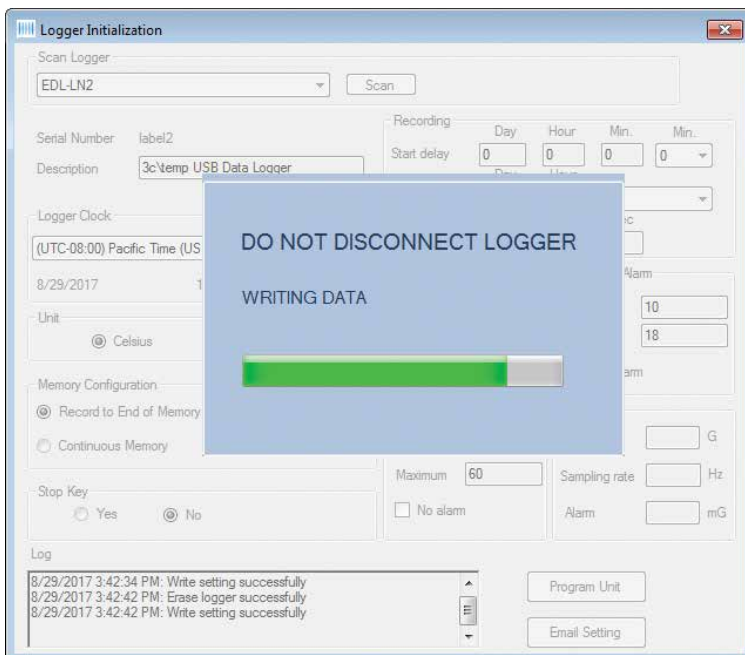


3C\Temp User Manual

- 6) Select the **Duration** of recording time. The **Sampling Interval** will be automatically calculated.
- 7) Or, select the **Interval**, desired. The **Duration** will be automatically calculated.
- 8) **Alarm:**
 - a. If you want a High Alarm, enter the temperature for the **Maximum**.
 - b. If you want a Low Alarm, enter the temperature for the **Minimum**.
 - c. **Quarantine** allows setting how many measurements taken outside the alarm limits is acceptable. For example, if the measurement interval is 1 minute, and the environment cannot exceed those limits for more than 5 minutes, then you would enter a 5 into the quarantine field. If more than 5 measurements are taken, then “Quarantine” will be showed on the display and reports. Not all logger models support this function.
 - d. If you don't want an Alarm, click the **No Alarm** button.
- 9) For loggers with external probes, enter the **Maximum** and **Minimum** Alarm values for the external sensor.
- 10) For loggers with Humidity sensors, enter the Maximum and **Minimum** Alarm values.
- 11) Under **Stop Key**, click **Yes** to allow the logger to be stopped manually (by holding down the start button for 4 seconds while the logger is recording). To disable this feature, click the **NO** button.
- 12) Click **Program Unit** to write the new configuration to the logger.

The progress bars will appear and **Event Log (13)** will update with Write Successful and End Settings successful.

The device is ready to run. To **Start Recording**, press and hold the START button on the unit until the green light flashes, or the display indicates that the unit is recording.

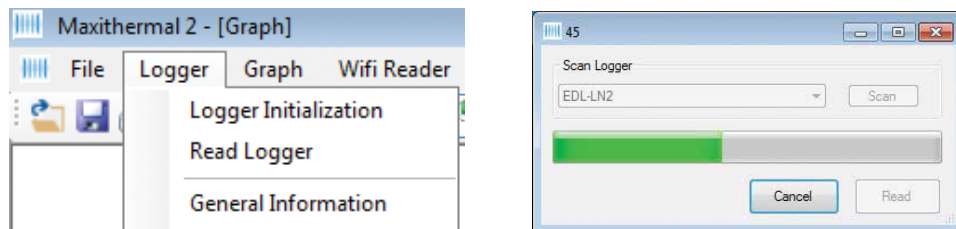


3C\Temp User Manual

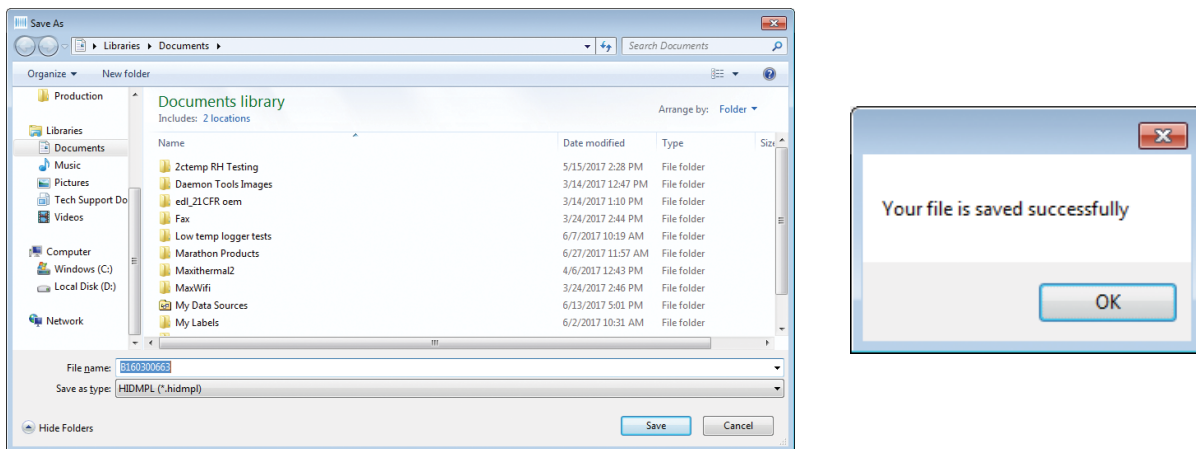
Reading the Logger:

Begin by starting the MaxiThermal2 software, connect the USB cable, reader station, or plug the device into the computer USB port.

On the menu bar select **Logger -> Read** Logger in the drop-down menu.

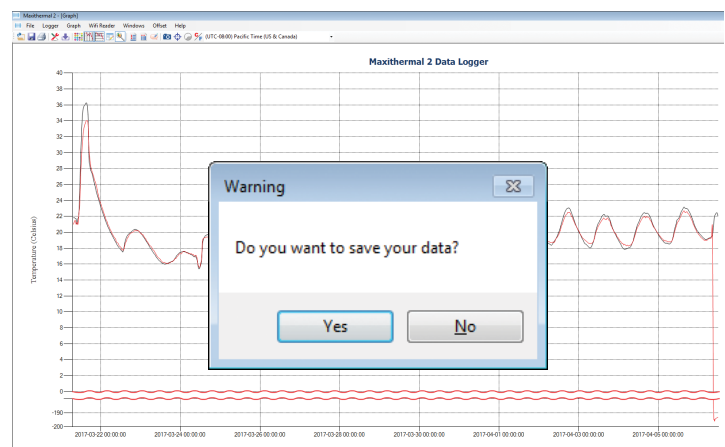


When the progress bar fills up, the Windows file explorer opens to choose a location to save the file. A dialog box will pop up once the location has been chosen letting you know the file has been saved successfully.



Next, all windows will close automatically and the graph is displayed.

When you close the plot a warning window will open which asks if you want to save the data. Click **Yes** or **No**. the file has already been saved. Unless the file has been modified (e.g. titles changed), click No.

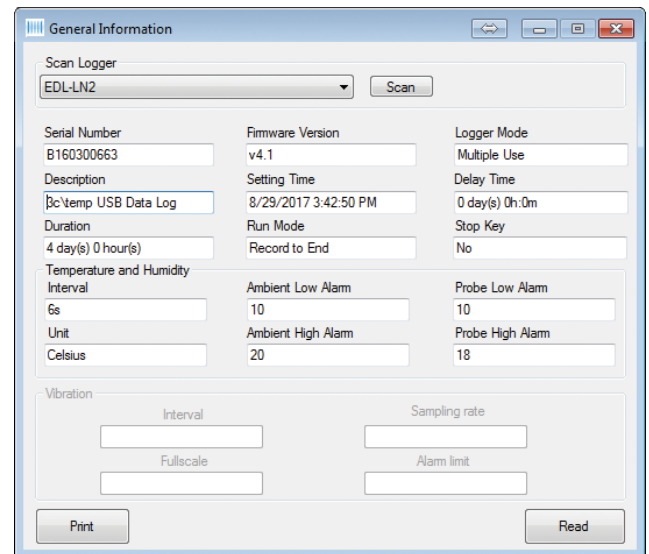
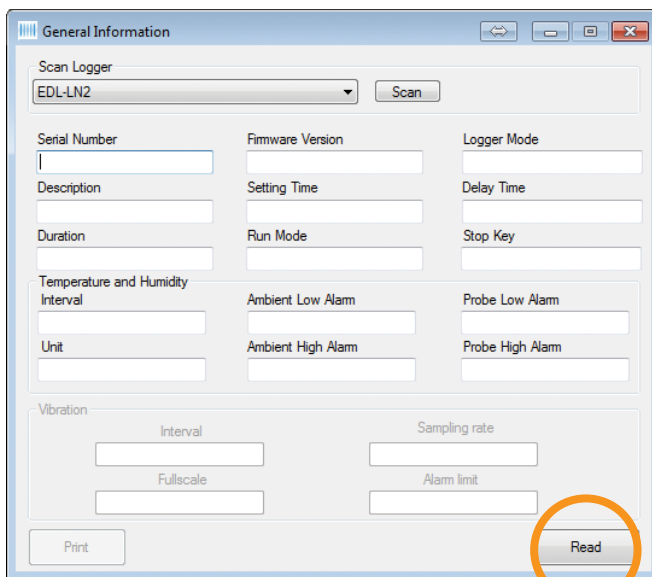
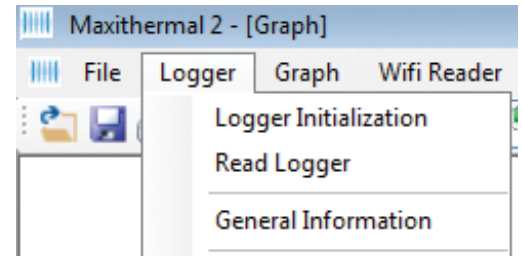


3C\Temp User Manual

Creating Reports:

On the menu bar select **Logger -> General Information** in the drop-down menu.

The General Information window will open. Click **Read**. The software will read the logger's information and fill in the fields.



On the Menu bar select **Graph -> Summary** in the drop-down menu, or click the Summary icon. The Summary Information window will open where you can scroll through the logger information.

