



SpotBot® 4G User Manual

Every year more than \$12B in goods are lost and over \$100B are damaged during transport. Companies are working to connect their supply chain to improve visibility of where shipments are, what conditions they are exposed to and who should be accountable for loss or damage.

The SpotBot® 4G Plus is the ideal solution for connecting you to your supply chain. Delivering tri-axial impact, temperature, and humidity monitoring along with location tracking, the SpotBot connects you to your assets via the SpotSee Cloud. Log-in to see the status of your shipment and receive alerts throughout its journey.

SpotBot 4G+ Features & Benefits

- Monitor location, impact, temperature and humidity
- 4G LTE-M and connectivity
- Access to information through a secure, dedicated web portal
- Accurate reporting of unacceptable conditions
- Custom, timely alerts of changing conditions of your shipment

Configure the SpotBot 4G

The SpotBot 4G+ is configured over the air by accessing the SpotSee Cloud. Users can change unit configurations as well as consignment and reporting parameters.

Battery Replacement

The SpotBot 4G+ has a custom battery pack. The battery will last between 1 and 3 years depending on unit configuration. When necessary, a battery replacement is available from SpotSee. Please contact your SpotSee representative for more information.

Firmware Updates

The SpotBot 4G+ firmware is automatically upgraded over the air. There is no need to connect the unit to an external computer. When the SpotBot 4G+ is connected to the cellular network, any available firmware upgrades will automatically download to the unit.

Access to Cloud Platform

Each device is shipped with a card containing its "Registration Token."

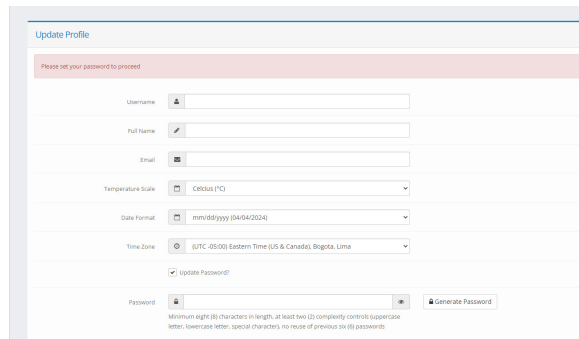
Users can either scan the QR code or follow the link to register a new device.



SpotBot® 4G User Manual

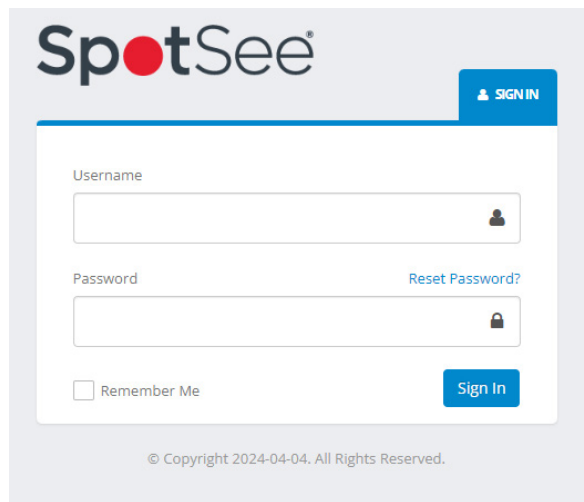
New User Set Up

New users will be prompted to set up a user name and password as well as to define some basic preferences.



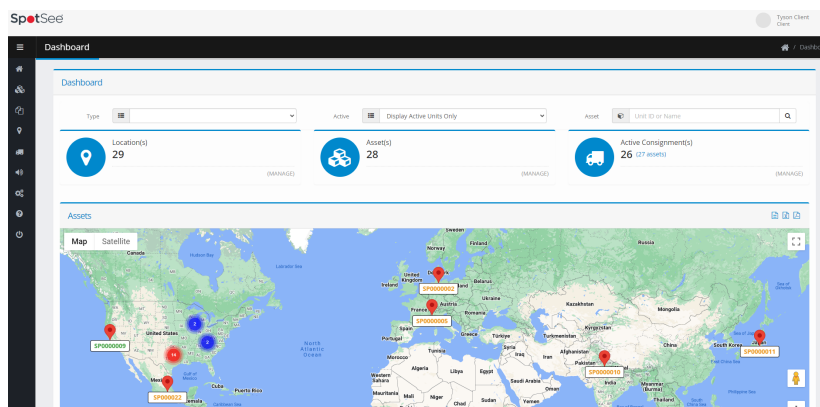
Returning User Sign On

After a username and password have been established, users can sign in by navigating to track.spotsee.io and signing in.



Dashboard

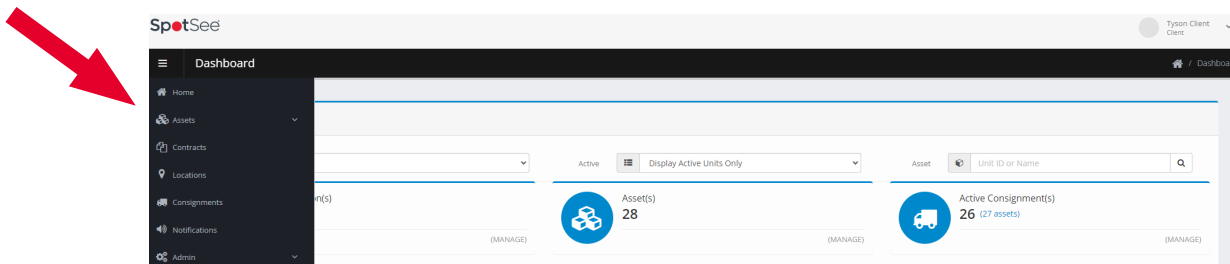
Upon signing in, users will access their Dashboard which provides an overview of the Locations, Assets, and Consignments (or Trips) belonging to that user. These items can be filtered by Asset Type and Status. It also enables search for a specific Asset.



SpotBot® 4G User Manual

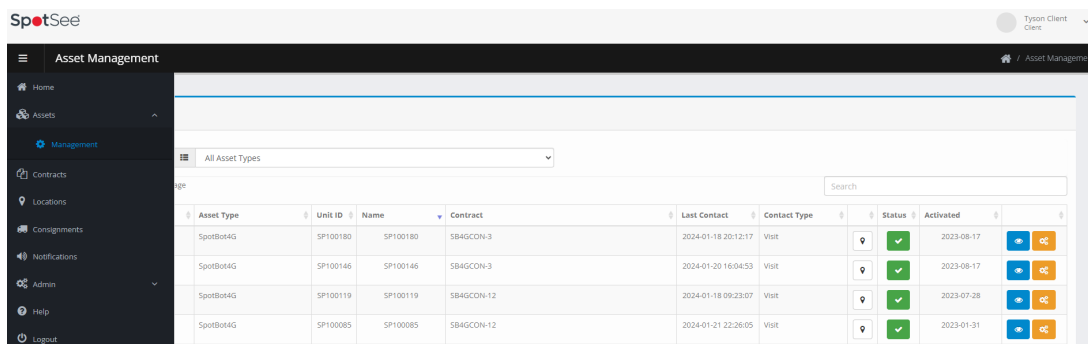
Navigation Bar

When the cursor is positioned over the left side of the DASHBOARD, the NAVIGATION BAR will appear. This menu allows the user to choose the appropriate screens for configuration and visualization of assets, contracts, locations, consignments, notifications.



Assets Management Screen

By using the Navigation Bar to enter the Asset Management Screen, the user will display summary information for each of their devices.



Below are definitions for the fields and buttons found on the Asset Management Screen:

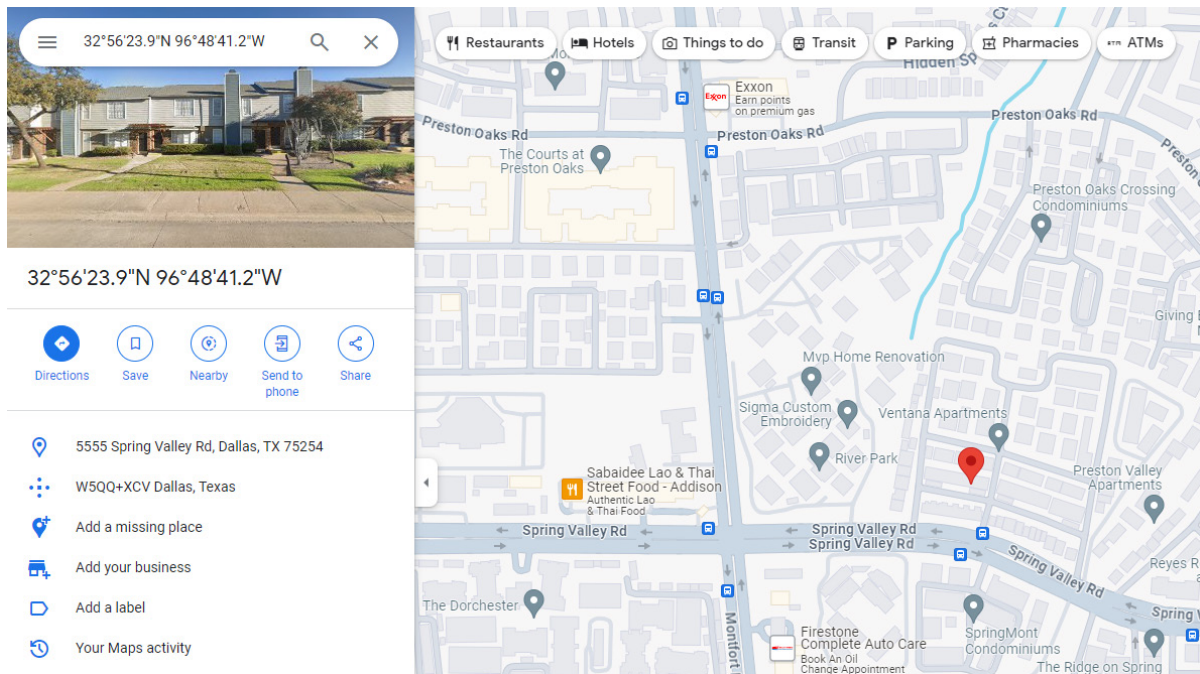
- **Client:** Company name of Client (purchaser) of the connected device.
- **Asset Type:** Type of SpotSee connected asset (SpotBot4G, ShockLog Cellular, ShockLog Satellite, etc.)
- **Unit ID:** Serial number of the unit (this number can be found on the front label of the device)
- **Contract:** Service contract associated with the device (3 Month, 6 Month, or 12 Month)
- **Last Contact:** Date and time when the unit last reported to the SpotSee Cloud
- **Contact Type:** Methodology used to deliver the most recent position of the unit (Visit = WiFi, Cell = Cellular Network)
- **Status:** Activation status of the device (green icon = active, red icon = inactive, and yellow icon = update pending)
- **Activated:** Date the unit was activated

SpotBot® 4G User Manual

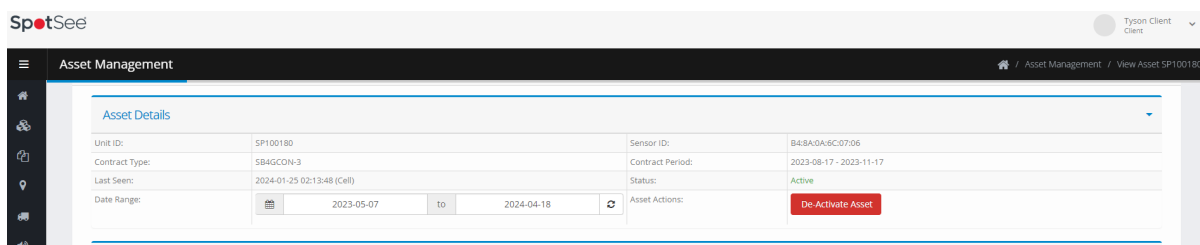
Users can view or edit detailed information for specific devices by clicking on one of the following icons associated with that device.



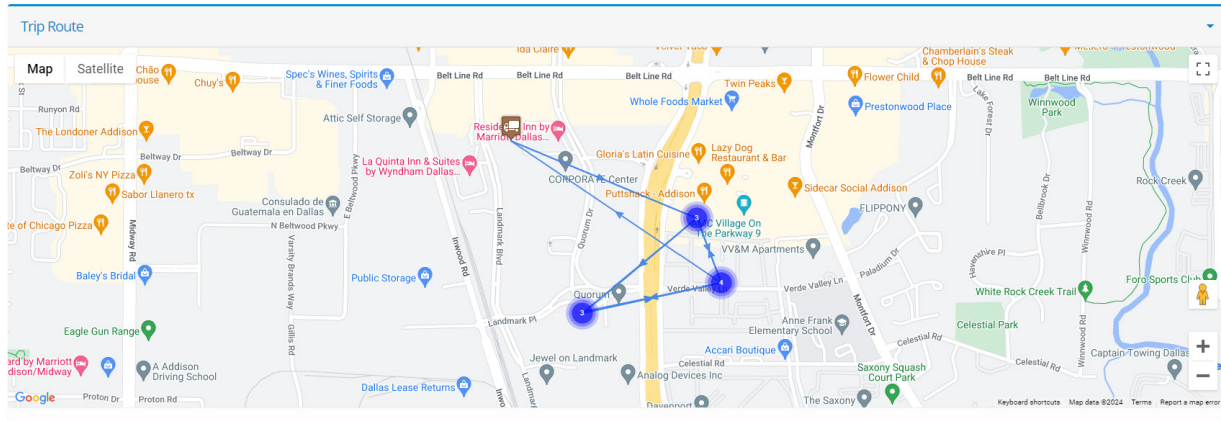
By clicking on the pin icon the user will open a new window with last reported geographic location of the device in google maps.



Clicking on the blue eye icon allows provides access to a screen with Asset Details, the Trip Route, the Trip Communication History, and the Temperature & Humidity Data for that specific device. From this screen the user can change the date range of the data viewed. The user can also deactivate the asset from this screen.

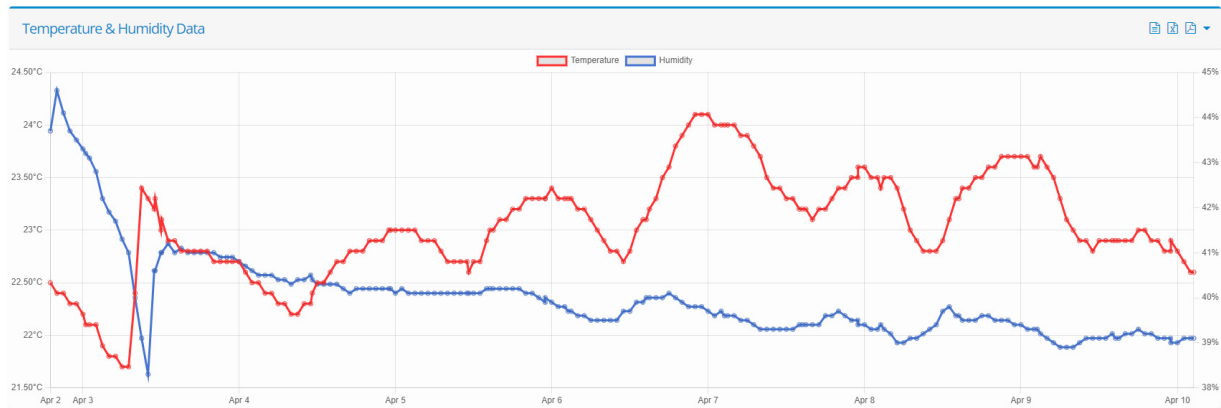


SpotBot® 4G User Manual



Trip History

Unit ID	Unit Name	Location	Type	Latitude	Longitude	Arrived	Duration
SP101011	SP101011		Cell	32.949	-96.821	04/10/2024 03:04:38	In transit
SP101011	SP101011		Cell	32.949	-96.821	04/09/2024 15:04:08	In transit
SP101011	SP101011		Cell	32.950	-96.822	04/09/2024 03:02:40	In transit
SP101011	SP101011		Cell	32.952	-96.828	04/08/2024 15:02:03	In transit
SP101011	SP101011		Cell	32.949	-96.821	04/08/2024 03:00:26	In transit



By clicking on the yellow settings icon, the user will navigate to the configuration screens for that device. The three tabs on this screen display the current unit configuration, notification, and advanced settings and provide the user with the opportunity to adjust these settings using drop-down menus.

Configure Asset SP100180

- Unit Configuration
- Notification Settings
- Advanced Configuration

Unit Name

Shock Threshold
Requested Value: 10g

Temperature Monitoring Period
Requested Value: 4 Hours

Upload Interval
Requested Value: 50 Hours

GPS Acquisition Interval
Requested Value: 120 Hours

Unit Configuration

Drop down menus may be used to adjust the following parameters:

- **Shock Threshold:** Range of impacts that will be recorded/reported by the unit (3-100G or Disable Shock Sensor)
- **Temperature Monitoring Period:** Interval for the device to record/report temperature/humidity data (15 Minutes- 150 Hours or Disable Temperature/Humidity Sensor)
- **Upload Interval:** Time interval for data upload when no movement is detected (2-100 Hours)
- **GPS Acquisition Interval:** Time interval between attempts to obtain a GPS location (48-144 hours)

The setting change is done over the air; a cell connection is needed for the configuration to be changed so it may take up to 24 hours for the update to be reflected in the unit. Select SAVE CONFIGURATION when you have completed the changes.

Configure Asset SP100954

Unit Configuration Notification Settings Advanced Configuration

Alarm Notifications

Email list to receive Impacts notifications (comma, or semi colon separated list)

Tick to Enable Alarm Notifications.

✓ Save Notification Settings

Notification Settings

To receive impact Alarm Notifications:

- Enter the email addresses of those to receive the alarms (separated by commas or semi-colons)
- Tick the check box to enable the notifications function
- Click the Save Notification Settings button

Unit Configuration Notification Settings Advanced Configuration

Wifi Settings

SSID

Requested Value:

WiFi Password

Requested Value:

SSID 2

Requested Value:



WiFi Password 2


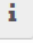
Requested Value:



SpotBot® 4G User Manual

Airplane Mode

Tick to Enable Airplane Mode and apply the settings below

Start Date  
Requested Value: N/A

Start Time  
Requested Value: N/A

Duration  
Requested Value: N/A

Advanced Configuration

The Advanced Configuration settings allow a user to adjust:

- **Wifi Settings** - known Wifi devices and passwords that the device may communicate with along its journey
- **Airplane Mode** - period when device will be in-flight and should not utilize cellular communication.

SpotBot® 4G User Manual

Contracts Screen

By using the Navigation Bar to enter the Contracts Screen, users are able to view Available and Allocated Contracts and make edits or changes to this allocation. The Contracts Screen provides a simple view of the contract length associated with each ASSET owned by the CLIENT.

Partner	Client	Unit ID	Unit Name	Contract	Status	Activated
Dallas Demo	Dallas Demo Client	SP100180	SP100180	SB4GCON-3	✓	2023-08-17
Dallas Demo	Dallas Demo Client	SP100146	SP100146	SB4GCON-3	✓	2023-08-17
Dallas Demo	Dallas Demo Client	SP100119	SP100119	SB4GCON-12	✓	2023-07-28
Dallas Demo	Dallas Demo Client	SP100085	SP100085	SB4GCON-12	✓	2023-01-31

- **Contract:** Service contract associated with the device (3 Month, 6 Month, or 12 Month)
- **Status:** The icons in the Status column denote the status of a contract (green check for active and red x for inactive).
- **Activated:** Date the unit/contract was activated.

The user has the ability to Unallocate, Edit, or Remove Contracts by clicking on the appropriate icons in the final column (hover cursor over the icon to determine its function).

Locations Screen

The Locations screen allows the user to set the origin point and destination point(s) for shipments. At a minimum, origin and destination LOCATIONS must be created to generate a CONSIGNMENT (or trip).

Partner	Client	Site Code	Name	Address	Latitude	Longitude	Radius	Return	Default	Status
SpotBot 4G Demo	Central Demo	Wrigley Field	Wrigley Field	1010 West Addison Street, Chicago, IL, USA	41.947525	-87.655332	100	✗	✗	✓
SpotBot 4G Demo	Northeast Demo	UPS Store	UPS Store Test	45 Lafayette Terrace, North Hampton, NH 03862, USA	42.997033	-70.815317	100	✗	✗	✓
SpotBot 4G Demo	West Demo	AGP Glass	Tracy	6872 Promontory Pkwy, Tracy, CA 95377, USA	37.732411	-121.529541	100	✓	✗	✓
SpotBot 4G Demo	West Demo	Tom's Test	Tom Daly	3304 Inverness Court, Sacramento, CA, USA	38.625277	-121.370803	100	✗	✗	✓
SpotBot 4G Demo	SP4GDEMO	test 1	Tim Test 1	2 Handcroft Close, Crondall, Farnham GU10 5RY, UK	51.239145	-0.860618	100	✗	✗	✓
SpotBot 4G Demo	Northeast Demo	Chicago	Tianev	304 Birchwood Lane, Bloomingdale, IL 60108, USA	41.941048	-88.065045	300	✗	✗	✓

SpotBot® 4G User Manual

Add Locations

Click the +Add Location button on the Locations Screen to create a new location.

The **Site Code** and **Name** are determined by the Client. Enter the physical address (or business name) into the Address field. This field is supported by Google Maps. A pin will appear in the **Map** on the right side of the screen. The pin can be moved to the exact location desired. It is possible to use the person icon to get a street level view of the address if desired.

Latitude and **Longitude** are populated automatically and will update if the pin is moved.

Radius is determined by the Client and represents the area around the pin that will determine if the shipment is at the defined location. The radius may be set between 100-1,500 meters.

Locations may also be assigned one of the following designations:

- **Default Home Location:** A user might choose this designation if it represents a point of origination for multiple Consignments.
- **Return Location:** A location where the device should be returned to if the units are in a closed supply loop. This field allows the user to know when units have returned and are available for redeployment.

SpotBot® 4G User Manual

Consignments Screen

The Consignments screen allows users to create specific trips. This screen contains information relevant to a trip: the partner, client, order reference, destination, journey start date, and status/date of delivery. In cases where the device is to be returned to its origin, the status under Returned and Date will be updated accordingly.

Consignments + Add Consignment

Partner: SP4GDEMO - SpotBot 4G Demo Client: View all

Status: Open Search: Unit ID or Name

10 records per page

Partner	Client	Ref	Destination	Started	Delivered	Date	Returned	Date	
SpotBot 4G Demo	Central Demo	Wrigley Field	Wrigley Field	10/16/2023					
SpotBot 4G Demo	Great Lakes Demo	Sample Trip	Shelly Test	09/19/2023					
SpotBot 4G Demo	Central Demo	Central Test	Kraig Nunn	08/08/2023					
SpotBot 4G Demo	Great Lakes Demo	Shipping to Customer XYZ	Archie's Den	06/07/2023		06/08/2023			
SpotBot 4G Demo	Northeast Demo	Test 3	Ficociello	06/07/2023					
SpotBot 4G Demo	SP4GDEMO	TCL Conference in Frankfurt	SpotSee Deeside	06/06/2023					

SpotBot® 4G User Manual

Add Consignment

To add a consignment, select +Add Consignment. The Consignment Ref field is user defined and the Client should determine a name/number that is meaning for them.

The **Start Date** defaults to the current date but should be adjusted to reflect the date that the journey is to begin, and the unit will start recording.

All Locations defined by the user will be available as options in the **Destination** and **Return Location** drop down menus. The user should select the appropriate, pre-defined, location for each. The **Return Location** is the address where the device will be returned at the end of a journey.

Once all the desired fields have been updated appropriately, click the **Create Consignment** button to move on to the phase of adding assets to the consignment.

The screenshot shows a web interface titled "Consignments". It contains the following fields and controls:

- Consignment Ref:** A text input field with a pencil icon on the left and an information icon (i) on the right.
- Start Date:** A date picker field showing "2024-04-18" with a calendar icon on the left.
- Destination:** A dropdown menu with a location pin icon on the left and the text "Select Destination".
- Return Location:** A dropdown menu with a home icon on the left and the text "Select Return Location (if required)".
- Create Consignment:** A green button with a checkmark icon and the text "Create Consignment".

SpotBot® 4G User Manual

Selecting Assets for a Consignment

When the user clicks on the **Create Consignment** button an **Assets** menu will appear. This screen allows the user to search and identify the unit or units that will be used on the consignment.

Notification Groups Screen

The Notification Groups screen provides many more notification and reporting options than the simple impact alerts that can be specified in the Notification Settings tab of the Asset Management screen. In Notification Groups, users can set up Impact, Temperature, Humidity, Transit, and Consignment reporting and alerts (as well as identify the timing and recipients for these notifications). To generate and distribute these reports to the appropriate parties, the user must first navigate to the Notification Groups screen.

Partner	Client	Group Name	Recipients	Schedules	Default	
SpotBot 4G Demo	Central Demo	Kraig's Demo Device	1	0		
SpotBot 4G Demo	Mexico Demo	Notifications Mexico	1	4		
SpotBot 4G Demo	Northeast Demo	Hartford	1	1		

SpotBot® 4G User Manual

Add a Notification Group

To add a Notification Group, click the +Add Notification Group button and the screen that enables configuration will appear.

Notification Groups

Group Name

Temperature Scale

Date Format

Time Zone

Default Notification Group?

Transit Settings

Days in Transit

Days at Location

Days on Report

Shock Thresholds

Shock Threshold

Days on Report

Format

Measurement Thresholds

Minimum Temperature Maximum Temperature Days on Report

Minimum Humidity Maximum Humidity Format

SpotBot® 4G User Manual

The transit settings allow the user to easily identify consignments or shipments that are outside of the expected delivery timeframe. The user will define Days in Transit for the shipment as well as Days at Location. Days on Report references the number of days that these parameters will be monitored.

Users will also determine the monitoring thresholds for Shock, Temperature, and Humidity using the appropriate drop-down menus. For each condition the user may also choose to Disable Notifications.

The user must select the format for reporting (pdf, excel, or CSV). Once the parameters are updated, click the Create Notifications Group button. The screen that appears allows the user to identify the report recipients and define the reporting schedule.

The screenshot displays two sequential configuration screens from the SpotBot 4G application. The top screen, titled "Recipients", features a header with a dropdown arrow and a table with columns: Name, Email, Mobile, Consignments, Impacts, Measurements, Transit, and On Event. Below the table is a text prompt: "Please add a recipient below". The second screen, titled "Add Recipient", contains three input fields for Name, Email (with an envelope icon), and Mobile (with an international format icon). Below these fields is a "Notifications" section with five checkboxes: "Consignment Reports?", "Impact Reports?", "Measurements Reports?", "Transit Notifications?", and "On Event Notifications?". At the bottom of this screen are two buttons: "Save Recipient" (with a dropdown arrow) and "Cancel Changes". The third screen, titled "Add Schedule", has a "Scheduled Time" section with a "Select Time Slot" dropdown. Below this is a "Scheduled Days" section with checkboxes for "Mon", "Tue", "Wed", "Thu", "Fri", "Sat", and "Sun". The "Include Notifications" section at the bottom has four checkboxes: "Consignment Reports?", "Impact Reports?", "Measurement Reports?", and "Transit Notifications?". At the bottom of this screen are two buttons: "Save Schedule" (with a dropdown arrow) and "Cancel Changes".